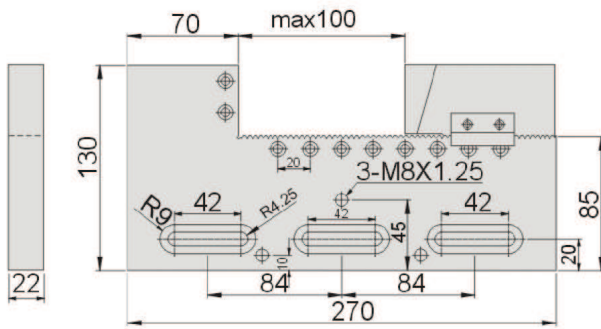


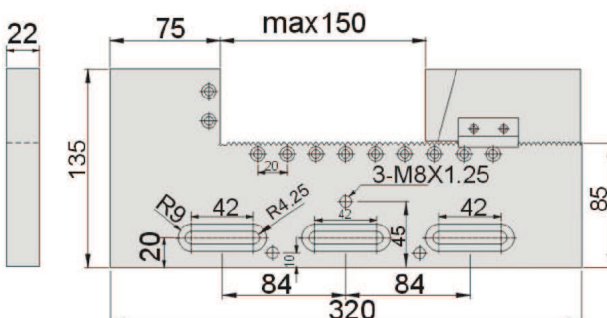
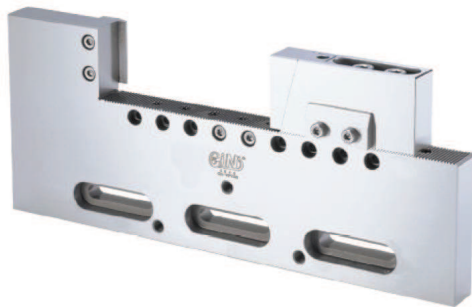
53135
WPV100
Stainless Precision Vise For EDM


Features :

- ▶ Adopting high quality stainless steel (ASSAB STAVAX) with Sub-zero Treatment after Vacuum Heat Treatment, stable and distortion free.
- ▶ With 45° lock down design, workpiece anti-floating when clamp.
- ▶ Hardness: HRC45°~ 55°
- ▶ Parallelism: within 0.003/100mm
- ▶ Squareness: within 0.005/100mm

Unit:mm

Spec	Clamping range			N.W.
	Max.	Thickness	Depth	
22x130x270	100	22	45	5.0kg

53140
WPV150
Stainless Precision Vise For EDM


Features :

- ▶ Adopting high quality stainless steel (ASSAB STAVAX) with Sub-zero Treatment after Vacuum Heat Treatment, stable and distortion free.
- ▶ With 45° lock down design, workpiece anti-floating when clamp.
- ▶ Hardness: HRC45°~ 55°
- ▶ Parallelism: within 0.003/100mm
- ▶ Squareness: within 0.005/100mm

Unit:mm

Spec	Clamping range			N.W.
	Max.	Thickness	Depth	
22x135x320	150	22	50	5.6kg

 WIRE EDM
EXTENSIONS CLAMP