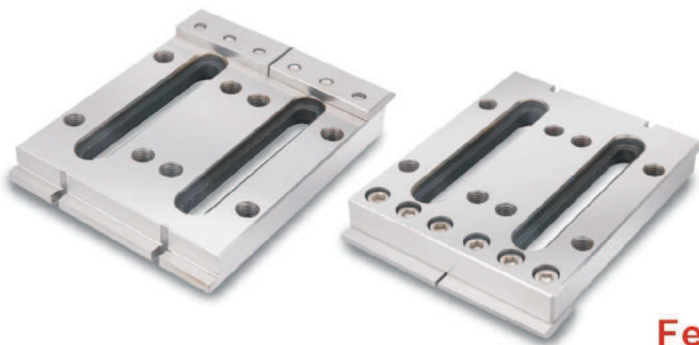


Wire EDM Extensions Clamp

53030

EW70

Wire EDM Extensions Clamp



Spec.: L120 x W100 x T15 + H5

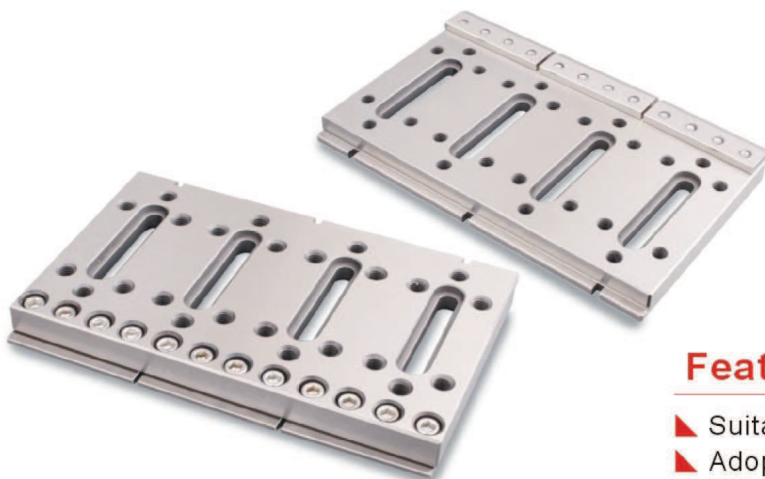
Features :

- ▶ Suitable for using in WEDM machines.
- ▶ Adopting stainless steel with Sub-zero Treatment after Vacuum Heat Treatment, stable and distortion free.
- ▶ Based on the type of WEDM machines and workpiece applied, it can make various combinations.
- ▶ Material: SUS440
- ▶ Hardness: HRC50°~ 55°
- ▶ Parallelism: within 0.003/100mm
- ▶ Squareness: within 0.005/100mm

53035

EW80

Wire EDM Extensions Clamp



Spec.: L120 x W200 x T15 + H5

Features :

- ▶ Suitable for using in WEDM machines.
- ▶ Adopting stainless steel with Sub-zero Treatment after Vacuum Heat Treatment, stable and distortion free.
- ▶ Based on the type of WEDM machines and workpiece applied, it can make various combinations.
- ▶ Material: SUS440
- ▶ Hardness: HRC50°~ 55°
- ▶ Parallelism: within 0.003/100mm
- ▶ Squareness: within 0.005/100mm