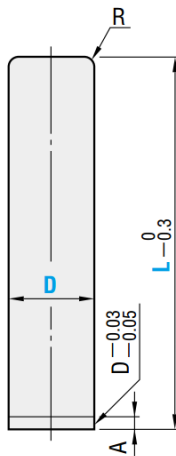
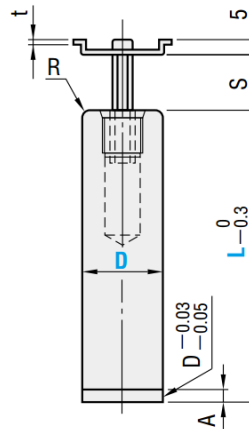


Catalog No.	Components							
	①	②	③	④	⑤	⑥		
PBSH	MSP	MBB LBB	MBSH	SWP	—	—		
PMSH	BSPM				—	STM	—	
PKSH	BSPK				—	—	STK	
GBSH	MSP		MBJH		SWP	—	—	
GMSH	BSPM					—	STM	—
GKSH	BSPK					—	—	STK
PB	MSP	MBB LBB	MBS	SWP		—	—	
PM	BSPM					—	STM	—
PK	BSPK					—	—	STK
GB	MSP		MBJ		SWP	—	—	
GM	BSPM					—	STM	—
GK	BSPK					—	—	STK

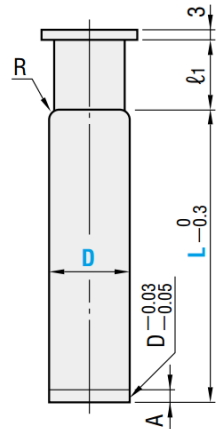
① MSP



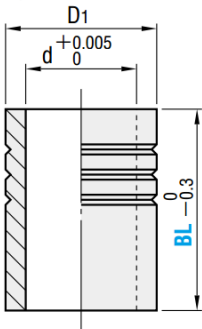
① BSPM
⑤ STM



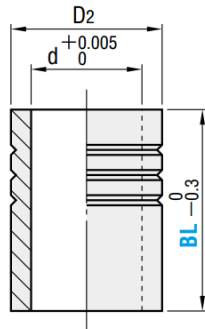
① BSPK
⑥ STK



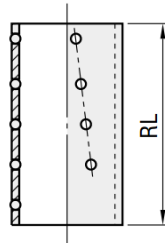
② MBB



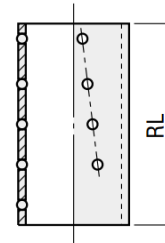
② LBB



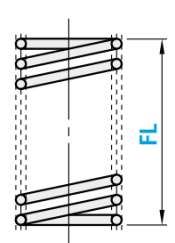
③ MBSH
MBS



③ MBJH
MBJ



④ SWP



MSP · BSPM · BSPK			
D	A	R	t
20	+0.020 +0.015	4	2.0
22			1.6
25			
28	+0.025 +0.020	5	
32			2.0
38			
45	7	5.0	
50		+0.035 +0.030	
60			

MBB · LBB			
d	D1 · D2	D1	D2
26	37	+0.5 +0.3	0 -0.007
28	40		
31	45		
36	50		
40	55	+0.5 +0.3	0 -0.008
48	64		
55	74		
60	83		
70	95	+0.5 +0.3	0 -0.010

RL	S	ℓ ₁
50	0 ~ 19	15
60	0 ~ 23	20
75	0 ~ 30	25
90	0 ~ 37	30
110	0 ~ 47	35

■ About high-rigidity ball guide post sets

These products utilize a high-rigidity ball cage (MBSH, MBJH) containing approximately 1.6 times more balls, achieving rigidity that is nearly equivalent to that of a plain guide at low cost.

Ball Guide Post Sets For Die Sets-Press Fit Post Type

模架用鋼球導柱組件-壓入型

Type	D	L								② MBB · LBB		RL	FL 10mm increments				
										Type	BL						
PBSH	20	100	110	120	130	140	150	160	170	180	M (MBB)	50	50	40 ~ 140			
												50	50	40 ~ 140			
PMSH	22	120	130	140	150	160	170	180		L (LBB)		60	60	40 ~ 140			
												60	60	40 ~ 140			
PKSH	25	120	130	140	150	160	170	180				L (LBB)	80	75	40 ~ 150		
													80	75	40 ~ 150		
GBSH	28	140	150	160	170	180	190	200					L (LBB)	60	60	50 ~ 150	
														80	75	50 ~ 150	
GMSH	32	160	170	180	190	200	220	240						L (LBB)	80	75	70 ~ 190
															80	75	70 ~ 190
GKSH	38	180	190	200	220	240	260		L (LBB)		100				90	80 ~ 190	
											80				75	80 ~ 190	
PB	45	180	190	200	220	240	260			L (LBB)	100				90	80 ~ 190	
											100				90	80 ~ 190	
PM	50	200	220	240	260			L (LBB)			120	110			80 ~ 190		
											120	110			80 ~ 190		
PK	60	200	220	240	260						L (LBB)	100	90		80 ~ 190		
												100	90		80 ~ 190		
GB												L (LBB)	120	110	80 ~ 190		
													120	110	80 ~ 190		
GM									L (LBB)				100	90	80 ~ 190		
													100	90	80 ~ 190		
GK										L (LBB)			120	110	80 ~ 190		
													120	110	80 ~ 190		



Type - D - L - ②Type - BL - FL

PBSH - D32 - L160 - L - BL80 - FL90

Type	MHS
MSP BSPM BSPK	M SUJ2 M S45C (Cap) H 58HRC ~ (Induction hardening)
STM	M S45C S Black oxide (Fe ₃ O ₄)
STK	M S45C S Black oxide (Fe ₃ O ₄) Accessories CB

Type	MH
MBB LBB	M SUJ2 H 58HRC ~
MBSH MBS	M A5056 (Aluminum)

Type	M
MBJH MBJ	M Polyacetal resin (POM)
SWP	M SWP-B