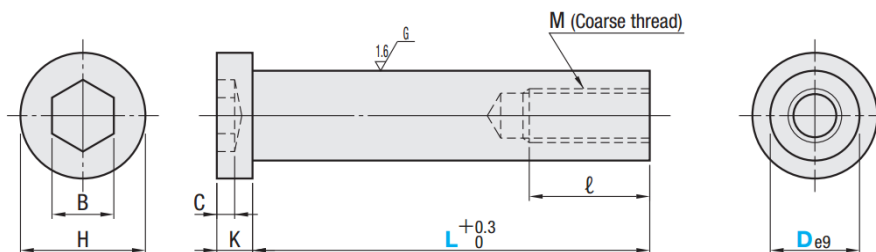




**PBTN**



**M** SCM435  
**H** 33~38HRC

C	K	H	B	M	ℓ	Part Number		L
						Type	D	
4	8	16	6	6	17	<b>PBTN</b>	10	40 50 60 70
								80 90
								100 110 120
								130 140 150
								160 170 180
4	8	18	8	8	20		13	60 70
								80 90
								100 110 120
								130 140 150
								160 170 180
						190 200 210		
220 230 240 250 260								
280								
7	13	24	10	10	23	16	100 110 120	
							130 140 150	
							160 170 180	
							190 200 210	
							220 230 240 250 260	
280 300								
9	13	27	14	12	26	20	120 130 140 150	
							160 170 180	
							190 200 210	
							220 230 240 250 260	
							280 300	
350								
400								
10	18	33	17	16	32	25	170 180	
							190 200	
							210 220	
							230 240	
							250 260	
							280 300	
							350	
400								

Alterations	Code	Spec.		
	<b>LC</b>	L dimension alteration		
		D	LC	
		10	35~175	
		13	55~275	
		16	95~295	
20	115~395			
25	165~395			
		5mm increments		
	<b>SC</b>	Spanner groove alteration		
		D	W	ℓ <sub>1</sub>
		13	11	20
		16	14	
		20	18	
25	23			

Available when D ≥ 13



Part Number L(LC) - (SC)

**PBTN20 L220**

**PBTN25 LC185 - SC**