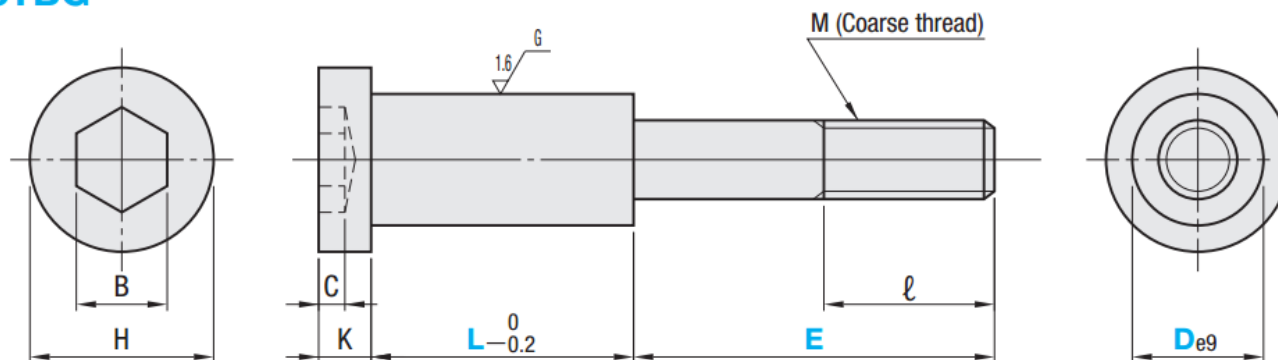




**STBG**



**M** SCM435  
**H** 33~38HRC

C	K	H	B	M	l	Part Number		L	E						
						Type	D								
4	8	16	6	6	17	STBG	10	10	19	24					
								15	19	24	29				
								20	19	24	29	34			
4	8	18	8	8	20		13	10	22	27					
								15	22	27	32	37			
								20	22	27	32	37	42		
							25	27		32	37	42	42		
							30	27		32	37	42	47		
7	13	24	10	10	23		16	10	30	35					
								15	30	35	40				
								20	30	35	40	45			
								25	30	35	40	45	50		
								30	35		40	45	50	55	
9	13	27	14	12	26		20	15	38	43					
								20	38	43	48				
						25		38	43	48	53				
						30		48		53	58				
						35		48		53	58				
10	18	33	17	16	32	25	15	44	49						
							20	49		54	59				
							25	49		54	59				
							30	49		54	59	64			
							40	54		59	64	69			



Part Number    L    -    E  
**STBG10    L13    -    E27**