

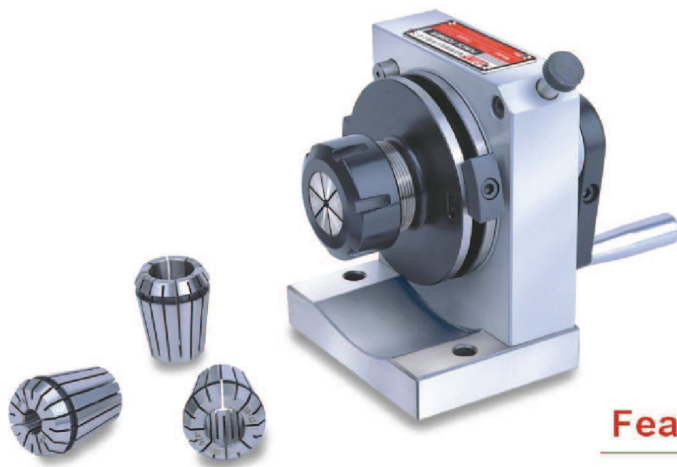
# Punch Former

**51250**

PFD

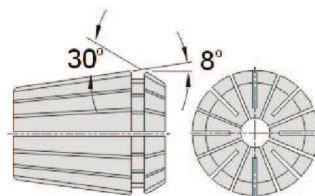
ER Collet Punch Former

PUNCH FORMER



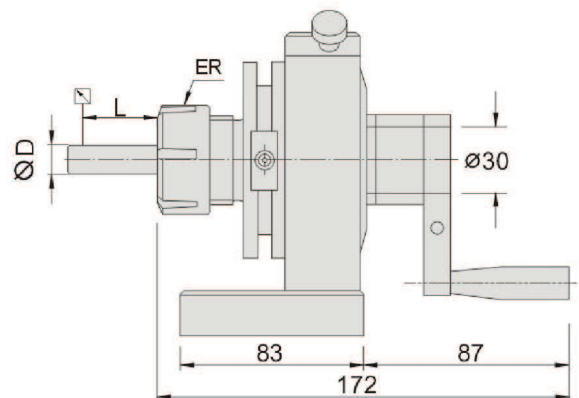
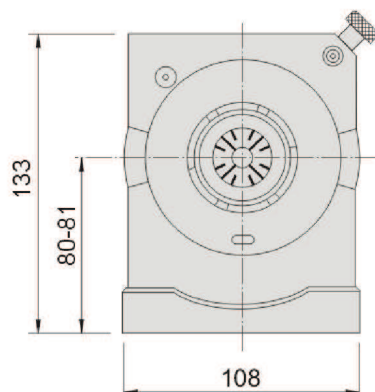
## Features :

- ▶ With ER collets, the flexible range of collet is 1mm.
- ▶ Clamping under 4mm apply ER16 collet.
- ▶ PFD can rapidly clamp the workpiece and achieving higher stability during processing, no need to adjust the center accuracy.
- ▶ This model is compatible with various ER collets such as ER16, ER32, ER40 etc...



Collet Standard Accuracy

L	D	Accuracy
6	1.0-1.6	0.015
10	1.6-3.0	0.015
16	3.0-7.0	0.015
25	7.0-10.0	0.015
40	10.0-18.0	0.020
50	18.0-24.0	0.020
60	24.0-34.0	0.020



Order No.	Model	Collet Size	N.W.
51250-16	PFD-ER16	2、3、4、6、8	5.6kg
51250-32	PFD-ER32	4、8、12、16、20	6.6kg
51250-40	PFD-ER40	6、10、16、20、25	7.6kg