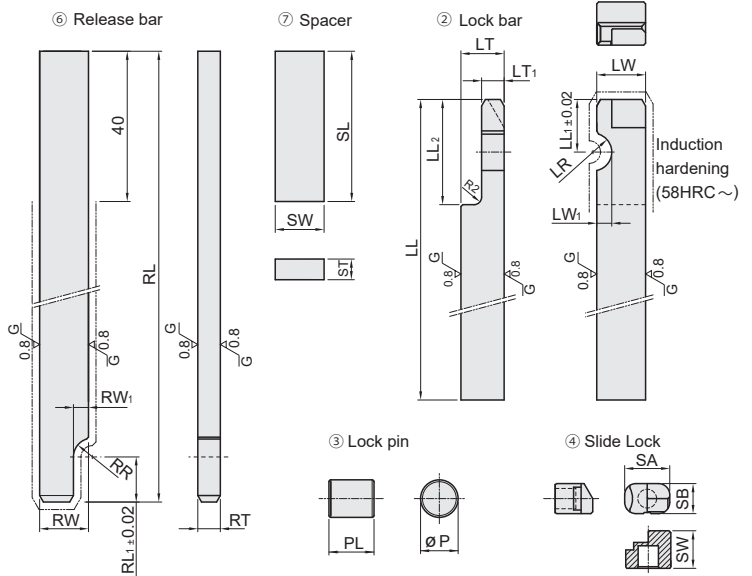
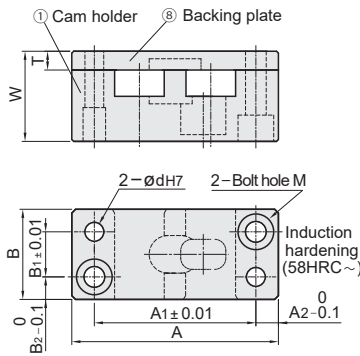
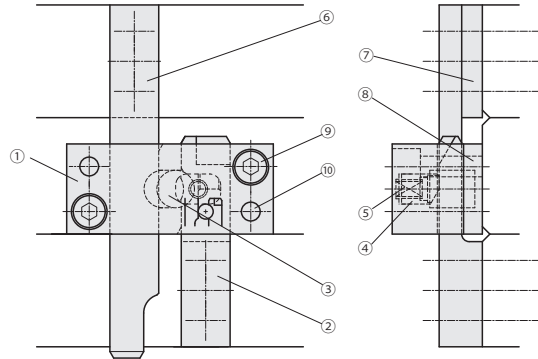




PLSZ
PLMZ



Ltem	M	H
① Cam holder	Alloy tool steel	50 ~ 55HRC
② Lock bar		50HRC ~
③ Lock pin		58 ~ 60HRC
④ Slide lock		58 ~ 60HRC
⑤ Spring	SUS631	
⑥ Release bar	Alloy tool steel	58HRC ~
⑦ Spacer	S45C	
⑧ Backing plate	Alloy tool steel	50HRC ~
⑨ Socket head cap screw	SCM435	38 ~ 43HRC
⑩ Dowel pin	SUJ2	45 ~ 50HRC

Part Number	① Cam holder • ⑧ Backing plate										② Lock Bar							
	A	A1	A2	B	B1	B2	d	M	W	T	LW	LW1	LR	LL	LL1	LL2	LT	LT1
PLSZ	55	43	6	24	12	6	5	5	24	5	13	4	5	100	14	28	11.5	6
PLMZ	67	53	7	32	16	8	6	6	32.5	6	18	5	6	150	18	36	16.5	10

③ Lock Pin		④ Slide lock			⑤ Spring	⑥ Release bar					⑦ Spacer			Accessories		
P	PL	SA	SB	SW		RW	RW1	RR	RL	RL1	RT	SW	SL	ST	⑨ Bolt	⑩ Dowel pin
10	12	12	8	10	WLH5 - 15	13	4	5	150	12	6	13	40	5.5	CB5 - 25	MSTM5 - 30
12	17	16	10	13	WLH6 - 20	16	5	6	200	16	10	16	50	6.6	CB6 - 35	MSTM6 - 35



Order Example

TYPE
PLSZ
PLMZ