

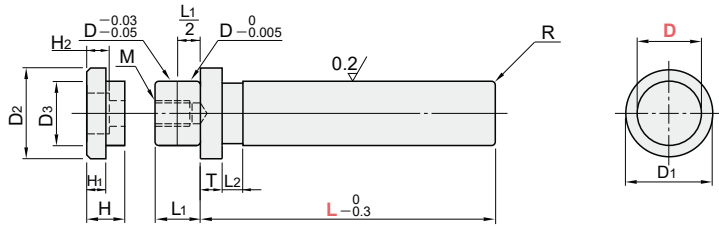
Detachable post type



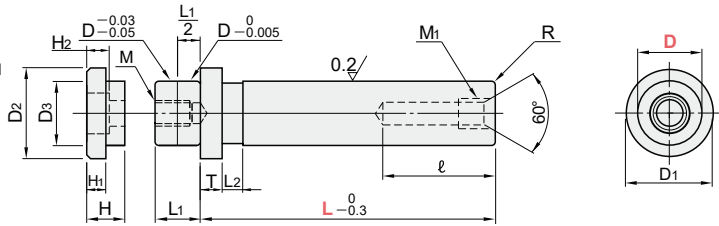
Press-fit post type



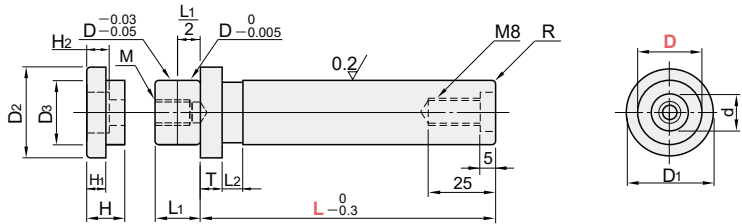
**MRP**



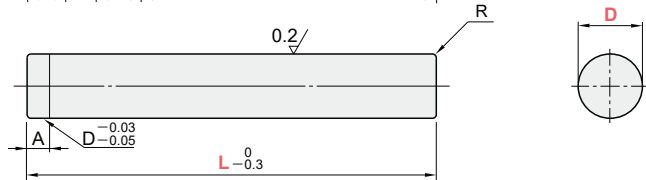
**BRPM**  
For movable stopper STM



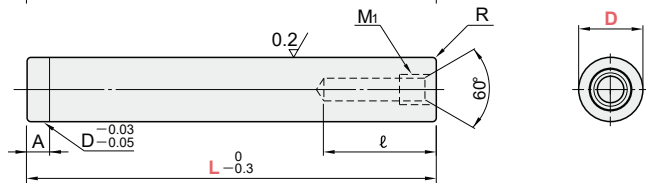
**BRPK**  
For fixed stopper STK



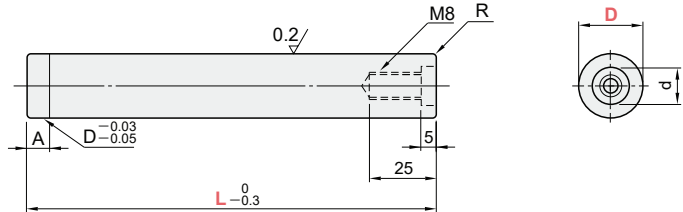
**MSP**



**BSPM**  
For movable stopper STM



**BSPK**  
For fixed stopper STK



M	H
SUJ2	58HRC~ Induction hardening (Depth 1.5 ~ 2mm)

D	D1	T	L1	L2	ℓ	M1 × P	d	A	M	R	D2	D3	H	H1	H2	Ⓐ Provided bolt	
20	+0.020 +0.015	29	5	15	10	38	14	4	M8 × 18	2.0	28	19.5	14	7	8.5	CB 8-25	
22		31	8	16		42					M10 × 1.5	30					21.5
25	36	18	50	M12 × 1.5		35					24.5						
28	+0.025	39	10	20	12	60		20	5	M10 × 22	3.5	36	27.5	16	8	10.5	CB 10-30
32	+0.020	44		23		50						40	31.5				
38	+0.030	53	12	27	15	60			6	M12 × 27	4.0	49	37.5	18	10	12.5	CB 12-35
45	+0.025	59		32		70	55					44.5					
50	+0.035	69	35	70	62	49.5											
60	+0.030	79	42	70	72	59.5	7		M14 × 31	5.0	62	49.5	20	12	14.5	CB 14-40	

TYPE	D	L												
MRP	20	80	90	100										
						110	120							
	22	80	90	100										
						110	120							
25	28	80	90	100										
						110	120	130						
BRPM	32					100	110	120	130	140	150	160		
									120	130	140			
BRPK	38								140	150	160			
												170	180	
	45								140	150	160			
												170	180	
50	60											160	170	
												180	200	
												160	170	
												180	200	

TYPE	D	L													
MSP	20	100	110	120	130	140									
							150	160	170	180					
	22					120	130	140	150						
									160	170	180				
25	28					120	130	140	150						
									160	170	180				
BSPM	32								140	150	160	170			
												180	190	200	
BSPK	38											160	170	180	190
	45														
												180	190	200	
50	60														
												200	220	240	



Order Example

TYPE	D	L
MRP	- D32	- L120
BSPM	- D38	- L220