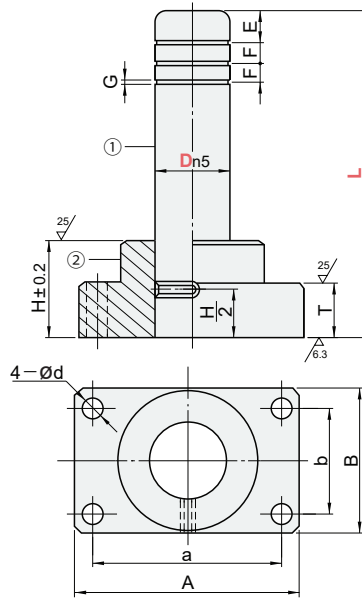


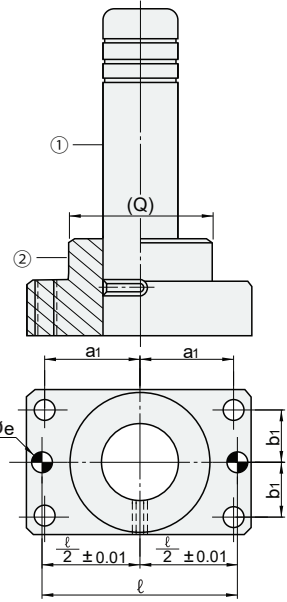


- ① M S45C
- ② H 55HRC~ (Induction hardening)
- ③ M FC250

MGOH



MGOHP (With dowel hole)

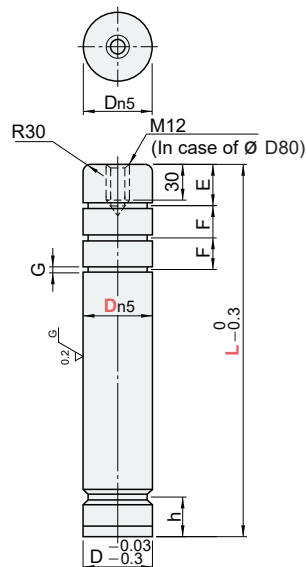


(Q) values are reference only
 Perpendicularity of guide holder bottom and guide post : 0.02mm/100mm or less



- ① M S45C
- ② H 55HRC~ (Induction hardening)

MGO (Guide post with oil grooves)



Dn5	M	D	A	B	a	b	d	H	T	(Q)	E	F	G	h	ℓ	a1	b1	eH7	③ Provided bolts	④ Provided dowel pins	
25 $+0.024$ $+0.015$	-	25	84	48	66	30	9	30	20	46	13	13		15	66	33	15	8		CB 8-35	MSTM 8-30
32	-	32	100	58	76	36	11	40	20	56	15	15	3	20	76	38	18	8	$+0.015$	CB10-40	MSTM 8-30
38 $+0.028$ $+0.017$	-	38	130	75	100	44	11	50	25	73	18	18		25	100	50	22	10	0	CB10-45	MSTM10-40
50	-	50	155	90	125	60	14	65	25	87	25	20		32.5	125	62.5	30	10		CB12-50	MSTM10-40
60 $+0.033$ $+0.020$	-	60	190	120	150	80	18	75	30	116	25	20	5	37.5	150	75	40	13	$+0.018$	CB16-60	MSTM13-50
80	12	80	230	150	180	110	22	100	35	145	30	25		50	190	90	55	16	0	CB20-75	MSTM16-60

TYPE	D	L																
MGOH MGOHP MGO	25	80	90	100	110	120												
								130	140	150	160	170	180	200				
	32	100					110	120	130	140								
							150	160	170	180	200	220	250					
	38	120						130	140	150	160	170	180					
								200	220	250	280	300						
	50	160							170	180	200	220	250					
									280	300	350							
	60	180								200	220	250	280	300				
										350	400							
	80	250									280	300	350					
											400	450						



Order Example

TYPE	D	L
MGOH32	-	200