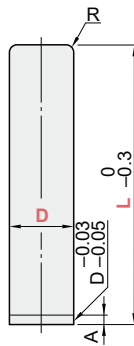
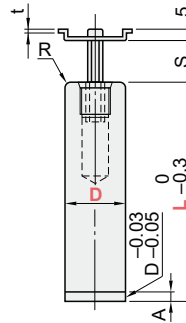


Catalog No.	Components						
	①	②	③	④	⑤	⑥	
PBSH	MSP	MBB LBB	MBSH	SWP	-	-	
PMSH	BSPM				MBJH	STM	-
PKSH	BSPK					MBS	-
GBSH	MSP		MBJ				STM
GMSH	BSPM				-		STK
GKSH	BSPK				-	STK	
PB	MSP	MBB LBB	MBS	SWP	-	-	
PM	BSPM				MBJ	STM	-
PK	BSPK					-	STK
GB	MSP		-			-	
GM	BSPM		-		STK		
GK	BSPK		-		STK		

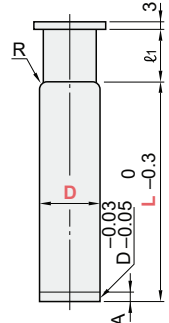
① MSP



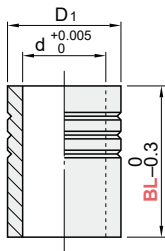
① BSPM
⑤ STM



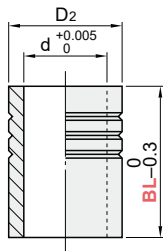
① BSPK
⑥ STK



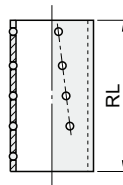
② MBB



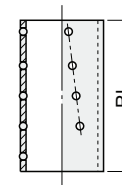
② LBB



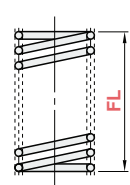
③ MBSH
MBS



③ MBJH
MBJ



④ SWP



MSP · BSPM · BSPK					
D	A	R	t		
20	+0.020	4	2.0	1.6	
22	+0.015		3.0		
25		5	3.5		
28	+0.025		4.0		
32	+0.020	6	4.0		2.0
38	+0.030		5.0		
45	+0.025	7	5.0		
50	+0.035				
60	+0.030				

MBB · LBB					
d	D1 · D2	D1	D2		
26	37	+0.5	0		
28	40			-0.007	
31	45				
36	50		+0.3		0
40	55			-0.008	
48	64				
55	74	0			
60	83		-0.010		
70	95				

RL	S	l1
50	0 ~ 19	15
60	0 ~ 23	20
75	0 ~ 30	25
90	0 ~ 37	30
110	0 ~ 47	35

Type	M	H	S
MSP BSPM BSPK	M SUJ2	M S45C(Cap)	H 58HRC~ (induction hardening)
STM	M S45C	S Black oxide (Fe ₃ O ₄)	
STK	M S45C	S Black oxide (Fe ₃ O ₄)	Accessories CB

Type	M	H
MBB LBB	M SUJ2	H 58HRC~
MBSH MBS	M A5056 (Aluminum)	

Type	M
MBJH MBJ	M Polyacetal resin (POM)
SWP	M SWP-B

Type	D	L									② MBB LBB		RL	FL 10mm increments
		Type	BL											
PBSH PMSH PKSH GBSH GMSH GKSH PB PM PK GB GM GK	20	100	110	120	130	140	150	160	170	180	M (MBB)	50	50	40 ~ 140
	22	120	130	140	150	160	170	180				50	50	40 ~ 140
		60	60									60	60	40 ~ 150
	25	120	130	140	150	160	170	180				80	75	40 ~ 150
		60	60									60	60	50 ~ 150
	28	140	150	160	170	180	190	200				80	75	50 ~ 150
		60	60								80	75	70 ~ 190	
	32	160	170	180	190	200	220	240			L (LBB)	100	90	80 ~ 190
		38	180	190	200	220	240	260				80	75	80 ~ 190
	45		180	190	200	220	240	260				100	90	80 ~ 190
		50	200	220	240	260						120	110	80 ~ 190
	60		200	220	240	260						100	90	80 ~ 190
										120		110		



Order Example

TYPE	D	L	② Type	FL
PBSH32	-	160	-	L80 - FL90