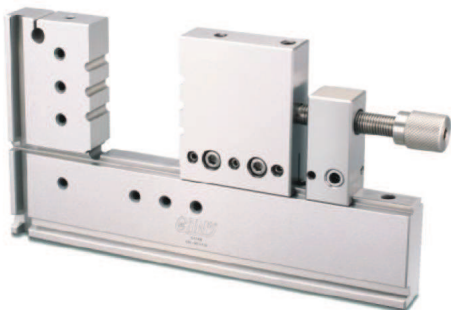


# Wire EDM Extensions Clamp

**53168**

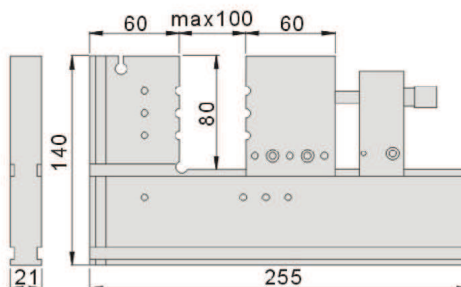
WFV100

Stainless Precision Vise For EDM



## Features :

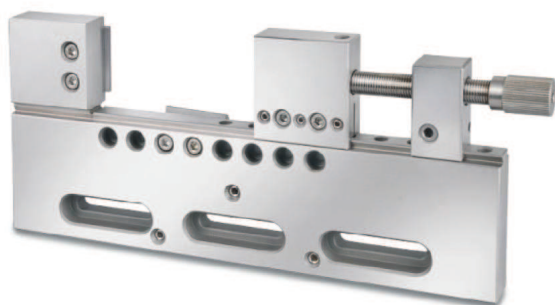
- ▶ Adopting high quality stainless steel (ASSAB STAVAX) with Sub-zero Treatment after Vacuum Heat Treatment, stable and distortion free.
- ▶ With screw bar design, workpieces can be easily and rapidly clamped to any suitable sizes.
- ▶ Hardness: HRC45<sup>o</sup>~ 55<sup>o</sup>
- ▶ Parallelism: within 0.003/100mm
- ▶ Squareness: within 0.005/100mm



**53170**

WHV

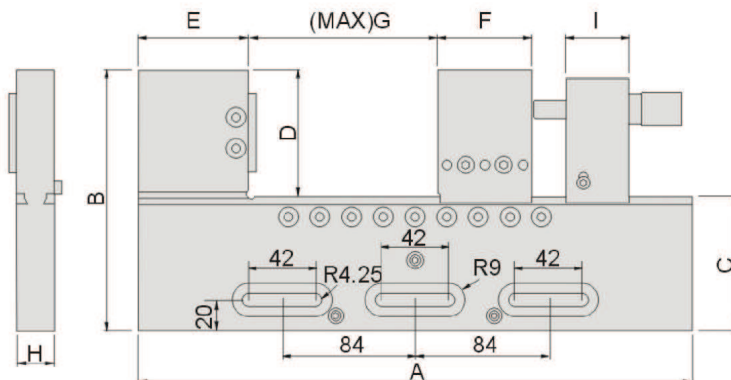
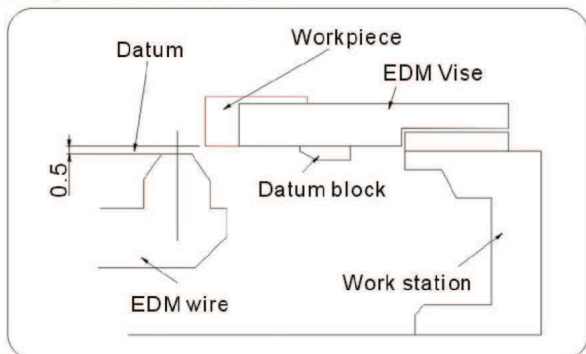
Stainless Precision Vise For EDM



## Features :

- ▶ Adopting high quality stainless steel (ASSAB STAVAX) with Sub-zero Treatment after Vacuum Heat Treatment, stable and distortion free.
- ▶ With screw bar design, workpieces can be easily and rapidly clamped to any suitable sizes.
- ▶ Hardness: HRC45<sup>o</sup>~ 55<sup>o</sup>
- ▶ Parallelism: within 0.003/100mm
- ▶ Squareness: within 0.005/100mm

### Graphic of installation



Unit:mm

Order No.	Model	A	B	C	D	E	F	G	H	I	N.W.
53170-01	WHV100	275	135	85	50	60	60	120	24	35	5.5kg
53170-02	WHV150	350	145	85	60	70	60	180	24	35	7.5kg