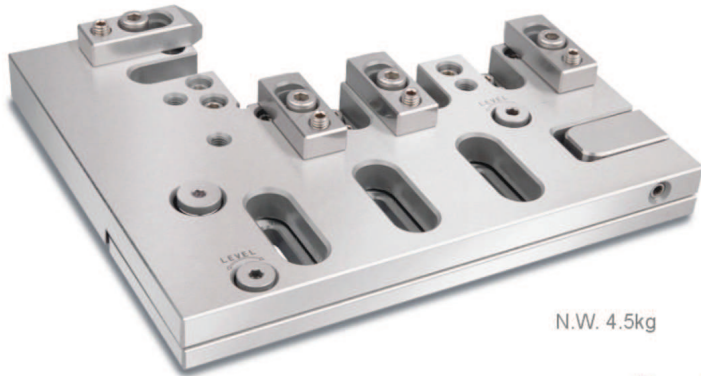


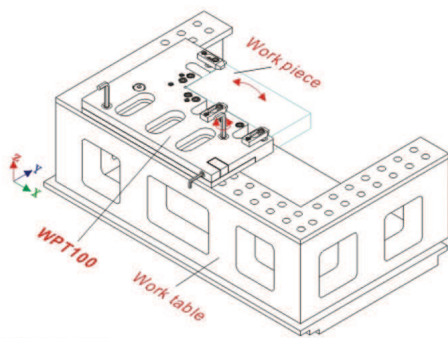
Wire EDM Extensions Clamp

53068 WPT100 Adjustable Fixture For EDM

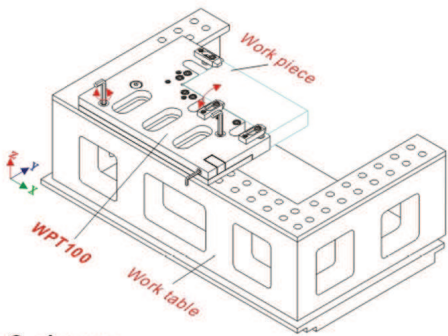


N.W. 4.5kg

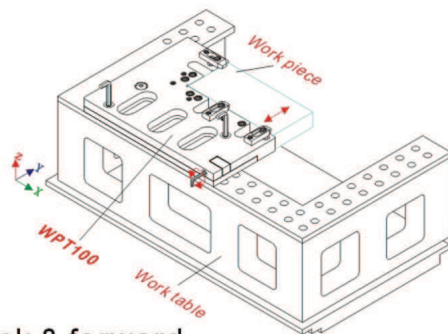
X,Y,Z axis fine-tuning illustration



1. left & right



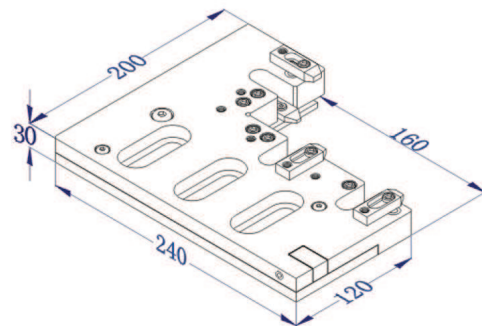
2. Up & down



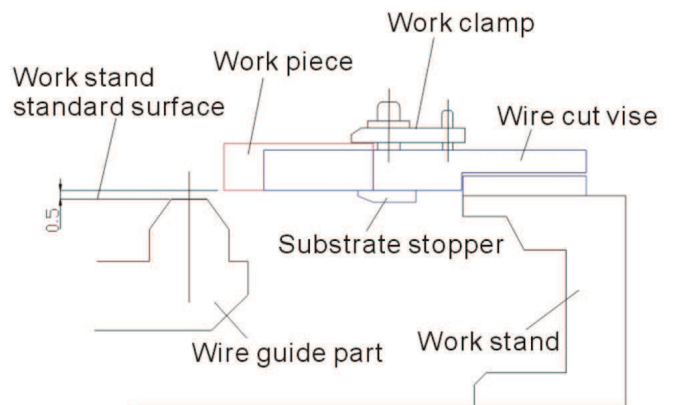
3. back & forward

Features :

- ▶ Adopting stainless steel with Sub-zero Treatment after Vacuum Heat Treatment, stable and distortion free.
- ▶ With X, Y, and Z axis fine-tuning function.
- ▶ Material: SUS440
- ▶ Hardness: HRC45°~ 55°
- ▶ Parallelism: within 0.003/100mm
- ▶ Squareness: within 0.005/100mm



Installation illustration



WIRE EDM EXTENSIONS CLAMP