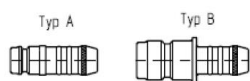
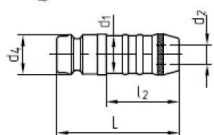
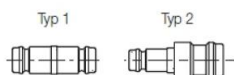
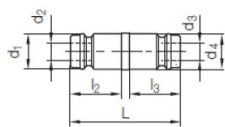


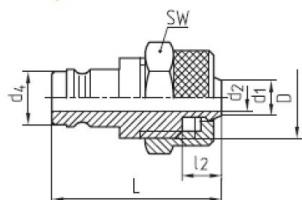
p [bar] max.	max. °C	D	SW	L	l ₁	d ₄	d	Order No.
10	Viton®/200	17	17	38	9	9	G1/4A	Z82/ 9/R1/4
15		22	22			13	G3/8A	13/R3/8



l ₂	L	d ₂	Typ	d ₄	d ₁	Order No.
22,5	43,5	6	A	9	9	Z83/ 9
25	42	9		13	13	13
32	61	13		19	19	19
22,5	39,5	6	B	13	9	13/ 9
25	54	9		19	13	19/13



p [bar]	l ₂	l ₃	L	d ₂	d ₃	Typ	d ₁	d ₄	Order No.
10	10	10	22	2,7	2,7	1	5	5	Z830/ 5x 5
		14	26,5	6	6	2	9	9	5x 9
	15	27	30,5	9	1	9	13	13	9x 9
			31	1	13	19	19	9x13	
20	27	46	13	2	13	2	19	19	13x13
		59	1	19	1	19	19	13x19	



SW	D	l ₂	L	d ₂	d ₄	d ₁	Order No.
14	M12x1	6	32	5	9	6	Z831/9/6