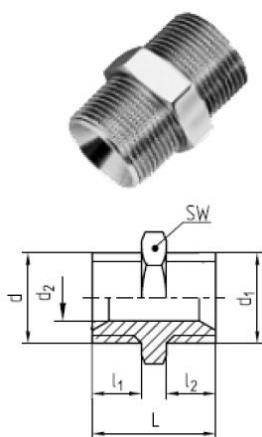
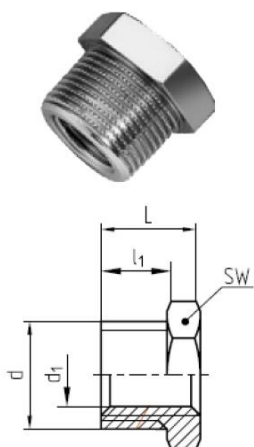


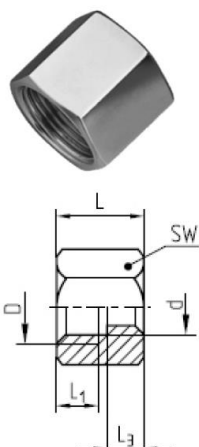
SW	L	l <sub>1</sub>	l <sub>2</sub>	d <sub>2</sub>	d <sub>4</sub>	d	α	Order No.
11	27	9	23	4,5	9	M 8x0,75	90°	Z81/ 9/ 8x0,75/90
				6		M10x1		9/10x1 /90
						R1/8		9/R1/8/90
15	34	11	25	9	13	M14x1,5		13/14x1,5 /90
						R1/4	13/R1/4/90	
24	47	16	42	13	19	M24x1,5		19/24x1,5 /90
						R1/2	19/R1/2/90	



SW	L	l <sub>1</sub>	l <sub>2</sub>	d <sub>2</sub>	d	d <sub>1</sub>	Order No.
17	23	9	9	6	M14x1,5	M14x1,5	Z812/14x1,5
						G1/4A	14x1,5/R1/4
						R1/4	
19				9	M16x1,5	M16x1,5	16x1,5
						G3/8A	16x1,5/R3/8
						R3/8	
27	40	16	16	13	M24x1,5	M24x1,5	24x1,5
						G1/2A	24x1,5/R1/2
22	36	12	12		G1/2A	R1/2	
27	40	16	16		G3/4A	G3/4A	R3/4



SW	L	l <sub>1</sub>	d	d <sub>1</sub>	Order No.
17	11	7	M14x1,5	M10x1	Z814/14x1,5/10x1
22	14	9	M18x1,5	M14x1,5	18x1,5/14x1,5
17	11	7	G1/4A	G1/8	R1/4 / R1/8
19	13	9	G3/8A	G1/4	R3/8 / R1/4
24	18	12	G1/2A	G3/8	R1/2 / R3/8
27	24	16	M24x1,5	M16x1,5	24x1,5/16x1,5
			G3/4A	G1/2	R3/4 / R1/2



SW	L	L <sub>1</sub>	L <sub>3</sub>	D	d	Order No.
27	24	12	10	G1/2	M14x1,5	Z815/R1/2/14x1,5
					M16x1,5	R1/2/16x1,5
					M14x1,5	Z815/R3/4/14x1,5
32	28	16		G3/4	M16x1,5	R3/4/16x1,5
17	26	-	26	G1/4	G1/4	Z815/R1/4/R1/4