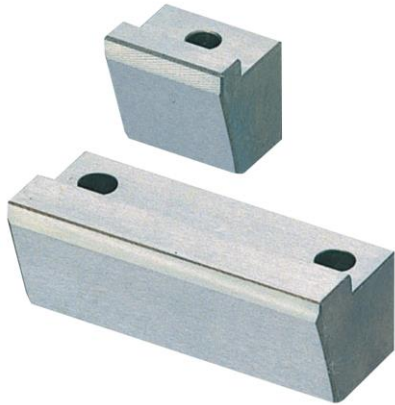


Part Number	M	H
<b>LBCSK</b>	SKS3	53~56HRC
<b>LBCMK</b>	HPM2T equivalent	37~41HRC

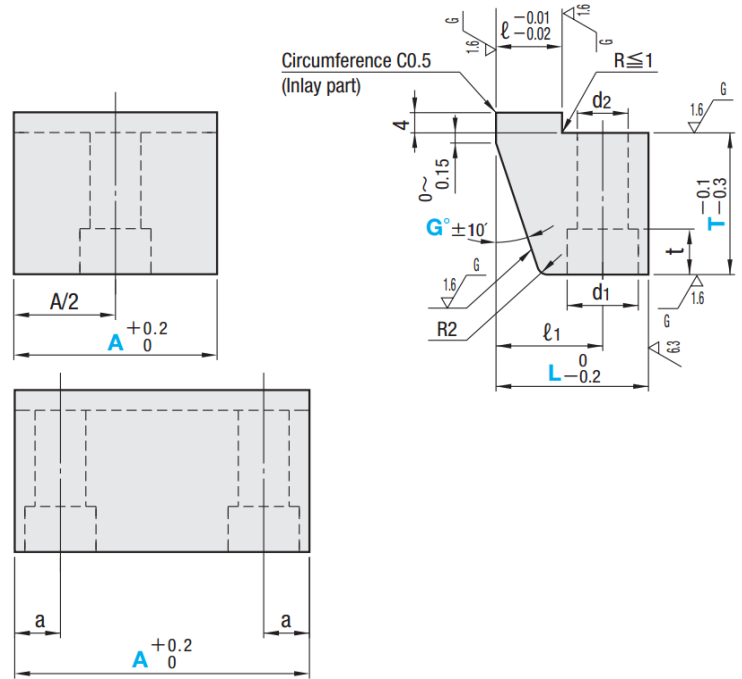
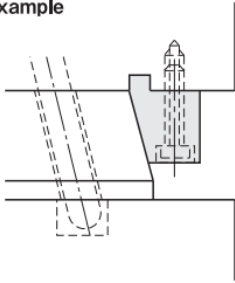
— Plain type —



A=15~23

A=28~78

Example



a	l	l <sub>1</sub>	d <sub>1</sub>	d <sub>2</sub>	t	Part Number		T	A	G°
						Type	L			
6	6	13	9.5	5.5	6	<b>LBCSK</b> (SKS3) <b>LBCMK</b> (HPM2T equivalent)	20	10	13 15 18 23 28 33 38 48	17 20 22
								15	15 18 23 28 33 38 48 58	15 17 20 22
								20	15 17	15 17
7	10	17	11.5	6.5	7		25	10	23 28 33 38 48 58	17 20 22
								15	18 23 28 33 38 48 58 68 78	15 17 20 22
								20		
8	13	21	14	9	9		30	20		
								25	33 38 48 58 68 78	15 17 20 22
								30		



Part Number — T — A — G°  
**LBCSK20** — **T15** — **A23** — **G17**  
**LBCMK25** — **T20** — **A33** — **G20**