

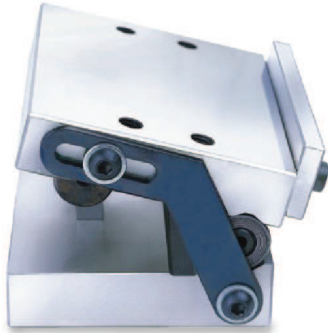
# Punch Former

**51300**

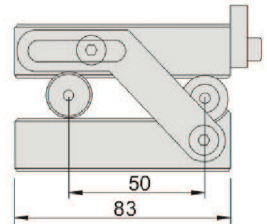
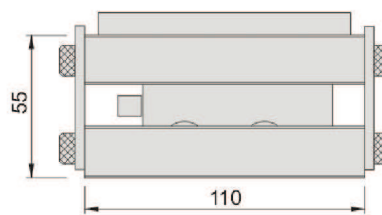
SPF50

Sine Plate for Punch Former

PUNCH FORMER

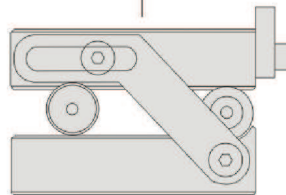
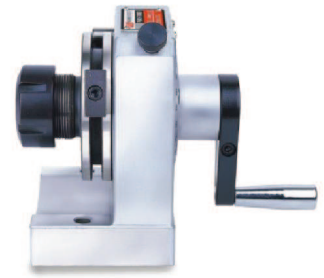
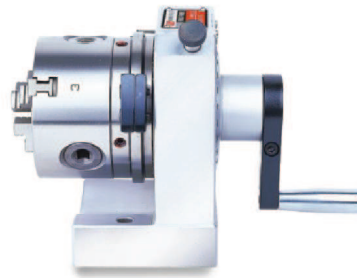
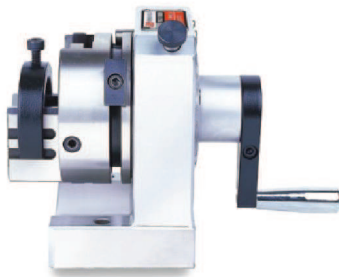


N.W. 3.3kg

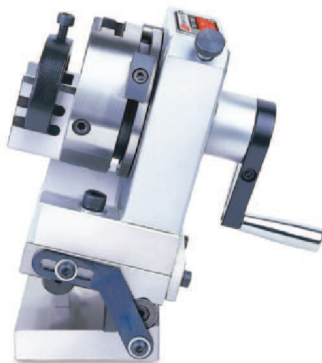


## Features :

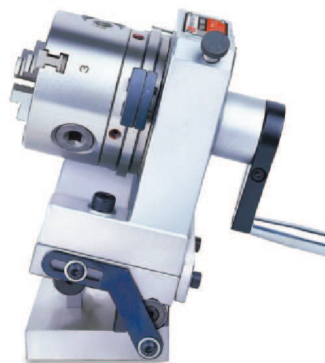
- ▶ SPF50 Sine Plate is designed for applying on PFA, PFB, PFC & PFD to make sine angles for processing workpiece.
- ▶ Hardness:HRC55°
- ▶ Accuracy:within 0.005mm



## Sine Punch Former



51300-01  
SPFB



51300-02  
SPFC



51300-03/04/05  
SPFD-ER16/32/40