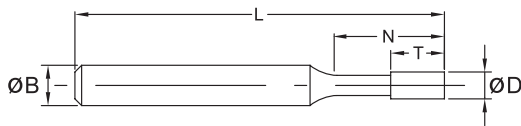


## 鑽石・氮化硼內孔磨棒 / Diamond & CBN Internal Points

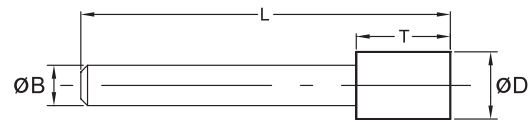


■ 本系列產品主要使用於各種內孔研磨、治具研磨或小孔徑之精密研磨。  
鑽石適用於研磨鎢鋼、陶瓷、藍寶石、玻璃 ...等。  
氮化硼適用於研磨熱處理硬化後之各種合金鋼材。

■ Diamond internal points are used for jig, internal grinding, and precision grinding of small holes in carbide, ceramics, sapphire, glass etc.  
CBN internal points are used similarly on tough, high carbon, high chrome harden steels.



Type A



z

單位 / Unit : mm

編號 / Order no.		Type	$\phi D$	T	N	L	$\phi B$	粒度 Grit size
鑽石/Diamond	氮化硼/CBN							
ID-3003	IB-3003	A	0.3	2	4	35	3.0	#600
ID-3004	IB-3004	A	0.4	2	5	35	3.0	#400
ID-3005	IB-3005	A	0.5	2	5	35	3.0	#400
ID-3006	IB-3006	A	0.6	3	5	40	3.0	#200
ID-3007	IB-3007	A	0.7	3	8	40	3.0	#200
ID-3008	IB-3008	A	0.8	3	8	40	3.0	#200
ID-3009	IB-3009	A	0.9	4	8	40	3.0	#200
ID-3010	IB-3010	A	1.0	5	8	40	3.0	#200
ID-3015	IB-3015	A	1.5	5	8	45	3.0	#150
ID-3020	IB-3020	A	2.0	5	12	45	3.0	#150
ID-3025	IB-3025	A	2.5	5	15	45	3.0	#150
ID-3030	IB-3030	A	3.0	5	15	45	3.0	#150
ID-3040	IB-3040	B	4.0	5	-	50	3.0	#150
ID-3050	IB-3050	B	5.0	8	-	50	3.0	#150
ID-3060	IB-3060	B	6.0	8	-	50	3.0	#150
ID-6040	IB-6040	A	4.0	10	22	80	6.0	#100
ID-6050	IB-6050	A	5.0	10	22	80	6.0	#100
ID-6060	IB-6060	A	6.0	10	22	80	6.0	#100
ID-6070	IB-6070	B	7.0	10	-	80	6.0	#100
ID-6080	IB-6080	B	8.0	10	-	80	6.0	#100
ID-6090	IB-6090	B	9.0	10	-	80	6.0	#100
ID-6100	IB-6100	B	10	10	-	80	6.0	#100
ID-6120	IB-6120	B	12	10	-	80	6.0	#100
ID-6140	IB-6140	B	14	10	-	80	6.0	#100
ID-6160	IB-6160	B	16	10	-	80	6.0	#100
ID-6180	IB-6180	B	18	10	-	80	6.0	#100

■ 標準粒度外，其他粒度請指明訂購。 / Grit size in the above table is standard for that item, others are available upon request.