

品名：MC 精密倍力虎鉗

型號：BMV

產品說明：

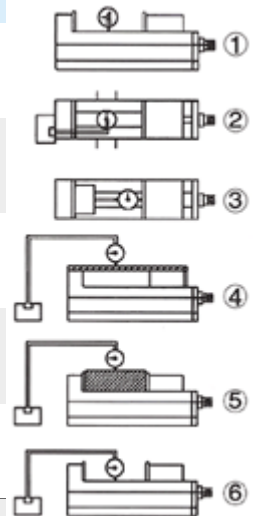
**Power vise equips with 8 pcs. support-rollers reaching greater output
Short body length; Large jaw opening. It permits application of multiple vises.**

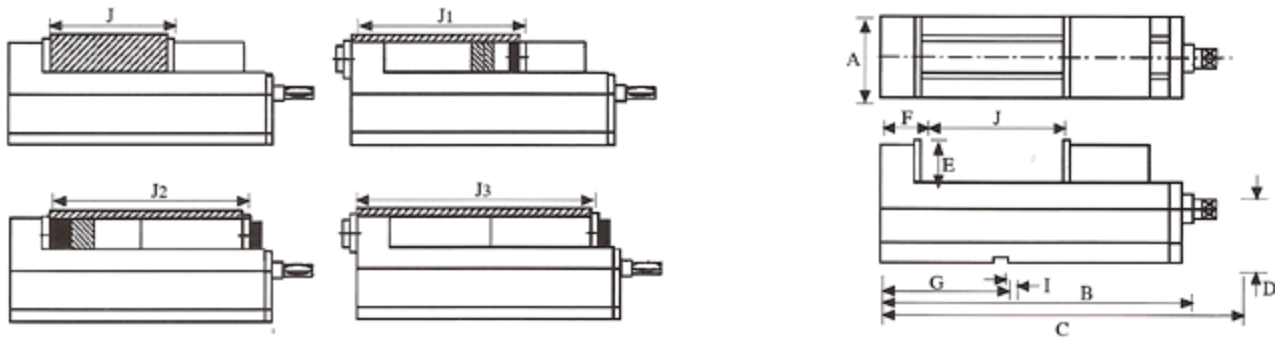
FEATURES

- One piece casting of vise bed and flexed jaw.
- Down thrust "Semis-sphere Segment" mechanism-eliminates jaw lift and work tilt.
- Rigid material-vise body of ductile iron FCD60JIS (equal to GGG60) with 60 kgs/mm² or 80,000 psi tensile strength.
- Vise bed flame with harden treatment up to HRC 45° and up takes up wear and maintain accuracy for long.

Accuracy testing standard

NO	Item	JIS grade 1	Guaranteed
1	Vise side-lock on bottom to slide way square	0.020 100mm	0.010 100mm
2	Keyways on bottom of vise bed square to clamping surface of jaw plate	0.020 100mm	0.015 100mm
3	Both jaw plate parallel	0.020 100mm	0.020 100mm
4	Max opening test block parallel to bottom of vise body	0.050 100mm	0.030 100mm
5	Top of rectangular test block clamed tightly by jaw paralld to bottom of vise body	0.030 100mm	0.020 100mm
6	Surface of vise bed parallel to bottom of vise body	0.020 100mm	0.015 100mm





MC Mechanical Power

Vise

Unit/mm

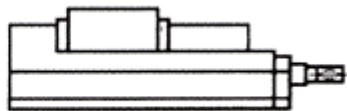
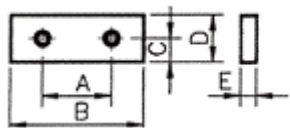
Model	A	B	C	D	E	F	G	I	Jaw Opening (Max.)				Clamping Force	Weight Body
									J	J1	J2	J3		
BMV-100V	101	340	470	85	48	80	125	16	145	190	230	320	4000kgf	27 kgs
BMV-130V	131	405	535	95	55	85	150	18	220	240	290	380	4500kgf	40 kgs
BMV-160V	161	495	625	105	58	100	165	18	290	320	360	470	5200kgf	58 kgs
BMV-200V	201	570	700	110	63	108	190	18	330	360	420	540	6500kgf	87 kgs

Optional Jaw Plates For BHV, BV, Vise

MODEL: HJ, LJ, VJ, TJ, SJ, FJ

HJ-100, 130, 160, 200

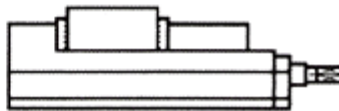
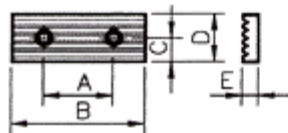
Unit/mm



HJ	100	130	160	200
A	60	90	90	120
B	100	130	160	200
C	22	25	25	28
D	48	55	58	63
E	15	15	15	18

LJ-100, 130, 160, 200

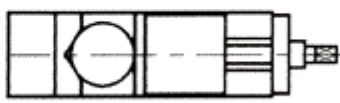
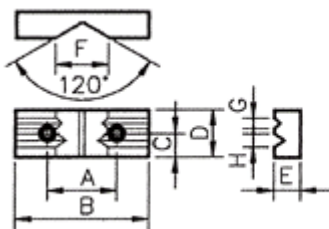
Unit/mm



LJ	100	130	160	200
A	60	90	90	120
B	100	130	160	200
C	22	25	25	28
D	48	55	58	63
E	15	15	15	18

VJ-100, 130, 160, 200

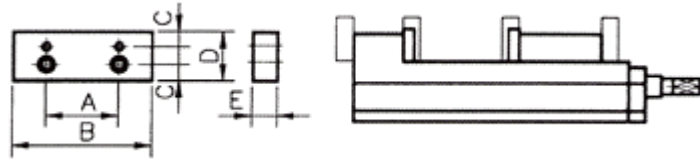
Unit/mm



VJ	100	130	160	200
A	60	90	90	120
B	100	130	160	200
C	22	25	25	28
D	48	55	58	63
E	30	32	32	40

TJ-100, 130, 160, 200

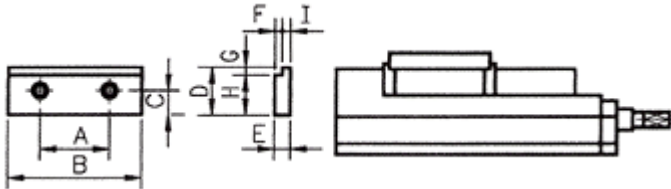
Unit/mm



TJ	100	130	160	200
A	60	90	90	120
B	100	130	160	200
C	22	25	25	28
D	64	69	74	88
E	21	24	24	31

SJ-100, 130, 160, 200

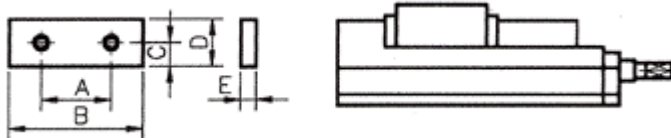
Unit/mm



SJ	100	130	160	200
A	60	90	90	120
B	100	130	160	200
C	22	25	25	28
D	48	55	58	63
E	15	15	15	18
F	5	5	5	5
G	5	5	5	5
H	43	50	53	58
I	10	10	10	13

FJ-1001, 1301, 1601, 2001
 FJ-1002, 1302, 1602, 2002
 FJ-1003, 1303, 1603, 2003
 FJ-1004, 1304, 1604, 2004
 FJ-1005, 1305, 1605, 2005

Unit/mm



FJ	1001	1002	1003	1004	1005	1301	1302	1303	1304	1305
A	60	60	60	60	60	90	90	90	90	90
B	100	100	100	100	130	130	130	130	130	130
C	22	22	22	22	22	25	25	25	25	25
D	48	63	73	48	63	55	73	103	63	73
E	15	21	23	48	48	15	23	30	48	48
F	M10	M10	M10	M10	M10	M10	M10	M10	M10	M10
FJ	1601	1602	1603	1604	1605	2001	2002	2003	2004	2005
A	90	90	90	90	90	90	90	90	90	120
B	160	160	160	160	160	200	200	200	200	200
C	25	25	25	25	25	28	28	28	28	28
D	58	73	103	63	73	63	103	123	63	102
E	15	23	30	48	48	18	30	37	63	63
F	M10	M10	M10	M10	M10	M12	M12	M12	M12	M12